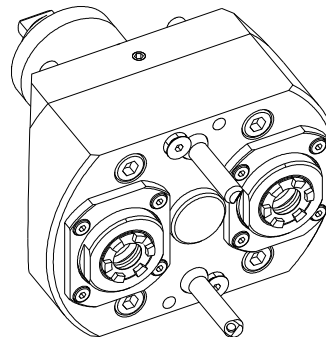
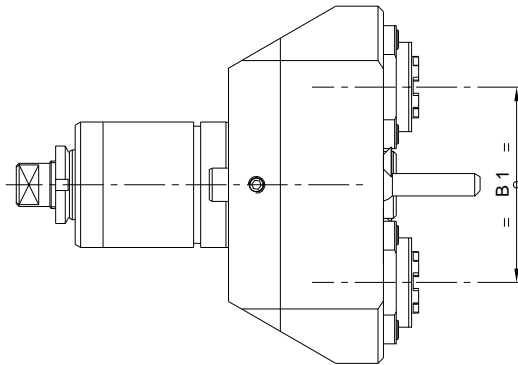
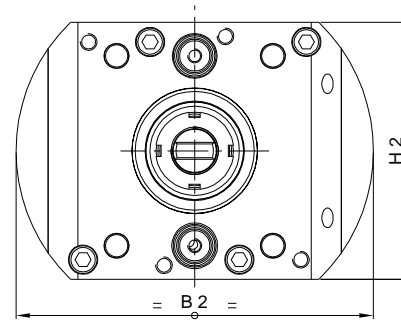
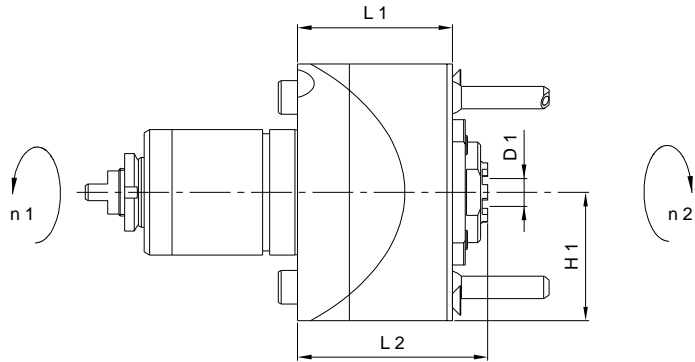
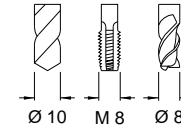


XLUO 20-2 R

for **Miyano**

6'000 min⁻¹ / rpm
i = 1:1



Radial-Bohr-Fräseinrichtung
Radial Drilling and Milling Unit
Unità radiale di foratura e fresatura
Unité de perçage et de fraisage radial

Externe Kühlung P max. = 70 bar	EKZ
External coolant supply Coolant pressure max. = 70 bar	ECS
Liquido refrigerante esterno Pressione max. = 70 bar	LRE
Arrosage par l'extérieur Pression max. = 70 bars	APE

Machine Types

ABX 51 TH2	BND 51 SY2
ABX 64 TH2	BNE 51 MSY
ABX 51 TH3	BNJ 42 SY
ABX 64 TH3	BNJ 51 SY

Bestell-Nr. Ref. No.	Radialkopf Radial Head	L 1	L 2	H 1	H 2	B 1	B 2	D 1 max.	Nm max.	Schmierung Lubrication	rpm max. min ⁻¹	i n 1 : n 2	Zubehör Accessory	Page
A 14101002270	XLUO 20-2 R Hi-Q / ERAX 16	55.5	68.1	46	92	70	128	10	20	Fettschmierung Lubricant grease	6'000	1 : 1	Spannzangen / Collets Dichtscheiben / Sealing Disks Spannschlüssel / Spanners Hochdruck Kühlrohr / High pressure coolant pipe	018 018 019 020