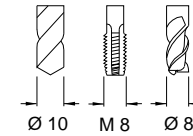
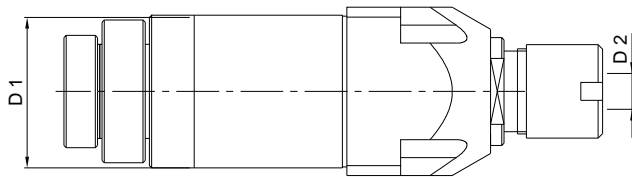
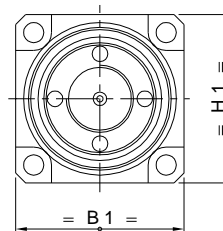
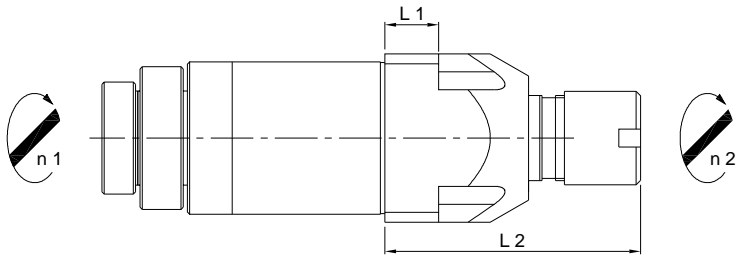


Star LLU 13-1 R

8'000 min -1 / rpm
i = 1:1



Radial-Bohr-Fräseinrichtung
Radial Drilling and Milling Unit
Unità radiale di foratura e fresatura
Unité de perçage et de fraisage radial



Machine Types
SR-20RII SR-20RIV
SR-20RIII SW-20

Auch einsetzbar auf / Also usable on
ECAS-12
ECAS-20
ECAS-20T
ECAS-32T
SR-20J C
SV-38R

| | Ref. No. Star | Ref. No. Su-matic | Radialkopf Radial Head | L 1 | L 2 | H 1 | B 1 | D 1 | D 2 Ø max. | Nm max. | Schmierung Lubrication | rpm max. min -1 | i n 1 : n 2 | Zubehör Accessory | Page |
|---|------------------|----------------------|----------------------------|-----|-----|------|------|-----|---------------|------------|------------------------------------|--------------------|----------------|--|------------|
| A | 571-55 | 14101000070 | LLU 13-1 R Hi-Q / ER 16 | 12 | 57 | 37.5 | 37.5 | 34 | 10 | 13 | Fettschmierung Lubricant grease | 8'000 | 1 : 1 | Spannzangen / Collets Dichtscheiben / Sealing Disks | 018 018 |