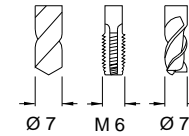
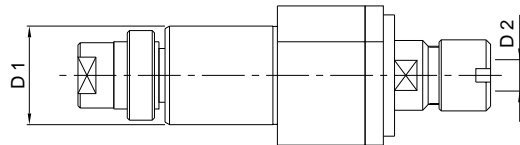
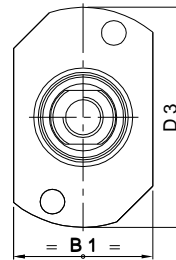
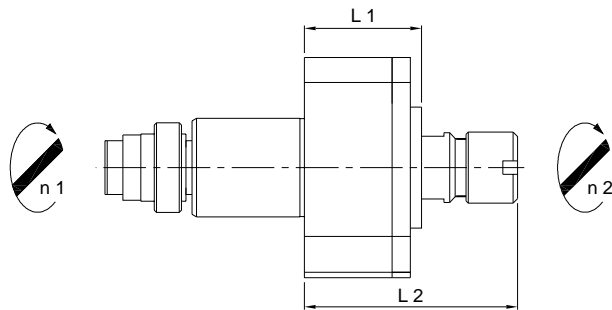


**Star** LLU 13-1 A

**8'000 min -1 / rpm**  
**i = 1:1**



Radial-Bohr-Fräseinrichtung  
 Radial Drilling and Milling Unit  
 Unità radiale di foratura e fresatura  
 Unité de perçage et de fraisage radial



**Machine Types**  
 SR-25J SR-32J N  
 SR-32J

**Auch einsetzbar auf / Also usable on**  
 ECAS-12 SR-20RIII  
 ECAS-20 SR-20RIV  
 SR-10J C  
 SR-20J C  
 SR-20J N  
 SR-20RII

| Ref. No.<br>Star | Ref. No.<br>Su-matic | Radialkopf<br>Radial Head   | L 1  | L 2  | B 1 | D 1 | D 2<br>Ø max. | D 3 | Nm<br>max. | Schmierung<br>Lubrication          | rpm max.<br>min -1 | i<br>n 1 : n 2 | Zubehör<br>Accessory                                   | Page       |
|------------------|----------------------|-----------------------------|------|------|-----|-----|---------------|-----|------------|------------------------------------|--------------------|----------------|--------------------------------------------------------|------------|
| A 541-61         | 14101000630          | LLU 13-1 A<br>Hi-Q / ERM 11 | 24.1 | 47.5 | 28  | 22  | 7             | 49  | 13         | Fettschmierung<br>Lubricant grease | 8'000              | 1:1            | Spannzangen / Collets<br>Dichtscheiben / Sealing Disks | 012<br>012 |