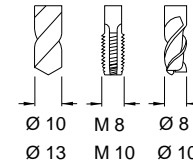
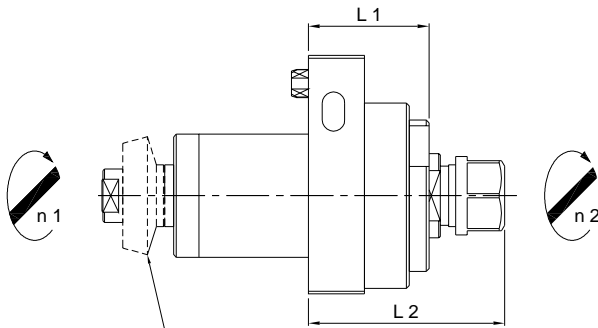


Star LLU 13-1 R

6'000 min⁻¹ / rpm
i=1:1



Radial-Bohr-Fräseinrichtung
Radial Drilling and Milling Unit
Unità radiale di foratura e fresatura
Unité de perçage et de fraisage radial



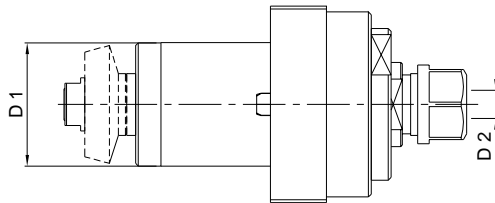
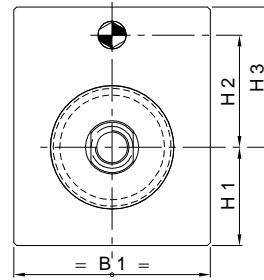
Ref. No.: 1016500670

Kegelrad ist im Lieferumfang nicht enthalten!

Bevel gear isn't included in the delivery!

Ingranaggio conico non fa parte della fornitura!

Engrenage conique n'est pas comprise dans la livraison!



Machine Types

ST-38
ST-38R

Auch einsetzbar auf / Also usable on
ECAS-32T
SV-32 (ERM 16)
SV-38R

	Ref. No. Star	Ref. No. Su-matic	Radialkopf Radial Head	L 1	L 2	B 1	H 1	H 2	H 3	D 1	D 2 max. Ø	Nm max.	Schmierung Lubrication	rpm max. min ⁻¹	i n 1 : n 2	Zubehör Accessory	Page
A	201-50	14101000110	LLU 13-1 R Hi-Q / ERM 16	43	70	70	35	40	50	44	10	13	Fettschmierung Lubricant grease	6'000	1:1	Spannzangen / Collets	006
B	581-51	14101000250	LLU 13-1 R Hi-Q / ERM 20	43	76	70	35	40	50	44	13	13	Fettschmierung Lubricant grease	6'000	1:1	Dichtscheiben / Sealing Disks	006