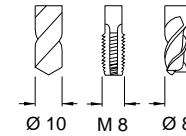
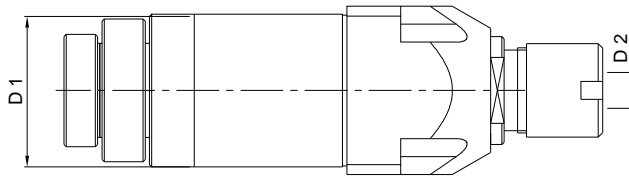
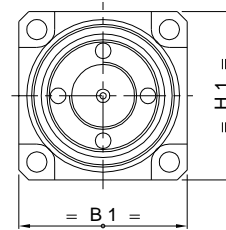
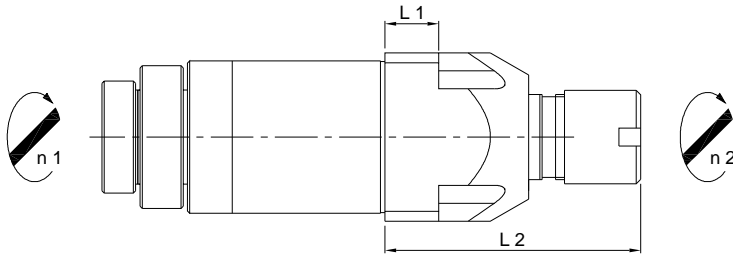


**Star** LLU 13-1 R

**8'000 min -1 / rpm**  
**i = 1:1**



Radial-Bohr-Fräseinrichtung  
 Radial Drilling and Milling Unit  
 Unità radiale di foratura e fresatura  
 Unité de perçage et de fraisage radial



**Machine Types**  
 SV-38R

**Auch einsetzbar auf / Also usable on**  
 ECAS-12 SR-20RIII  
 ECAS-20 SR-20RIV  
 ECAS-20T SW-20  
 ECAS-32T  
 SR-20J C  
 SR-20RII

Ref. No. Star	Ref. No. Su-matic	Radialkopf Radial Head	L 1	L 2	H 1	B 1	D 1	D 2 Ø max.	Nm max.	Schmierung Lubrication	rpm max. min -1	i n 1 : n 2	Zubehör Accessory	Page
571-55	14101000070	LLU 13-1 R Hi-Q / ER 16	12	57	37.5	37.5	34	10	13	Fettschmierung Lubricant grease	8'000	1 : 1	Spannzangen / Collets Dichtscheiben / Sealing Disks	014 014