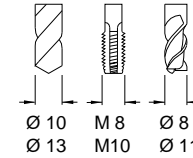
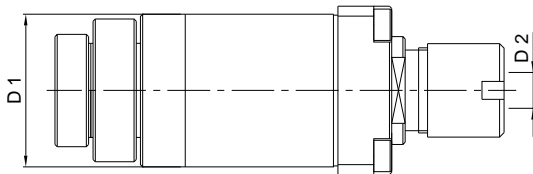
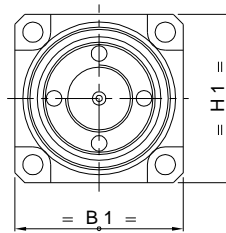
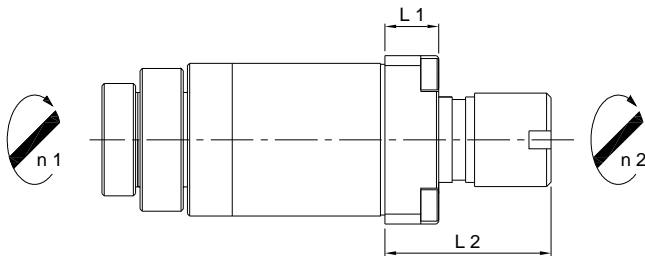


**Star** LLU 13-1 R

8'000 min<sup>-1</sup> / rpm  
i = 1:1



Radial-Bohr-Fräseinrichtung  
Radial Drilling and Milling Unit  
Unità radiale di foratura e fresatura  
Unité de perçage et de fraisage radial



**Machine Types**

SV-32 SV-38R  
SV-32JII

**Auch einsetzbar auf / Also usable on**

ECAS-12 SR-20RIII SV-20  
ECAS-20 SR-20RIV SW-20  
ECAS-32T SR-25J  
SR-20J C SR-32J  
SR-20J N SR-32J N  
SR-20RII SV-12

Ref. No. Star	Ref. No. Su-matic	Radialkopf Radial Head	L 1	L 2	H 1	B 1	D 1	D 2 Ø max.	Nm max.	Schmierung Lubrication	rpm max. min <sup>-1</sup>	i n 1 : n 2	Zubehör Accessory	Page
A	331-50	14101000040 LLU 13-1 R Hi-Q / ER 16	12	37	37.5	37.5	34	10	13	Fettschmierung Lubricant grease	8'000	1 : 1	Spannzangen / Collets	014
B	-	14101002950 LLU XX-1 R Hi-Q / ER 20	12	46.5	37.5	37.5	34	13	13	Fettschmierung Lubricant grease	8'000	1 : 1	Dichtscheiben / Sealing Disks	014