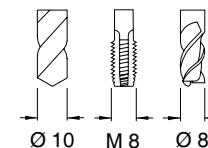


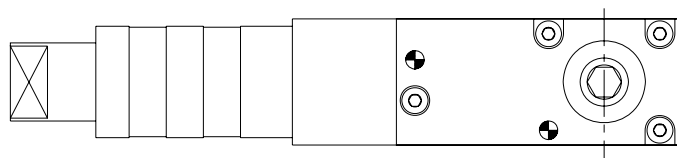
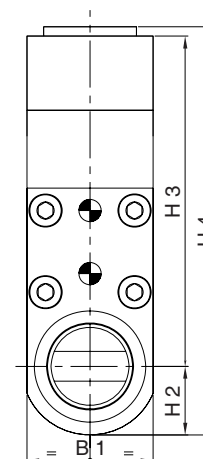
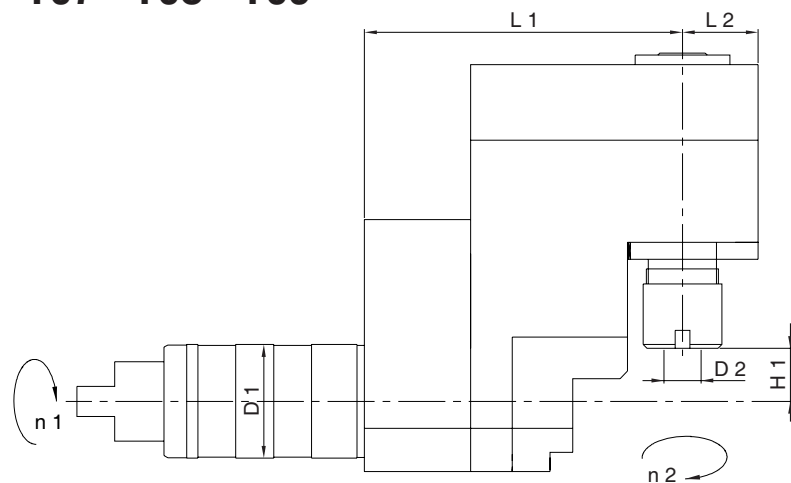
NEXTURN
SWISS TURN LEADER

LAHS 1

8'000 min -1 / rpm i = 1:1



**Einbauposition
T07 - T08 - T09**



Winkel-Bohr-Fräseinrichtung
Drilling and Milling Angle Unit
Testa ad angolo di foratura e fresatura
Unité de perçage et de fraisage angulaire

| | |
|------------------------------|-----|
| Externe Kühlung | EKZ |
| External coolant supply | ECS |
| Liquido refrigerante esterno | LRE |
| Arrosage par l'extérieur | APE |

| | Bestell-Nr. EKZ Ref. No. ECS | Winkelkopf Angle Head | L 1 | L 2 | H 1 | H 2 | H 3 | H 4 | B 1 | D 1 Ø | D 2 Ø max. | Nm max. | Schmierung Lubrication | rpm max. min -1 | i n 1 : n 2 | Zubehör Accessory |
|---|---------------------------------|--------------------------|-----|-----|-----|------|-----|------|-----|----------|---------------|------------|------------------------------------|--------------------|----------------|----------------------|
| A | 14.800.0.0187.0 | LAHS 1 ERM 16 | 84 | 20 | 14 | 18.5 | 89 | 91.5 | 34 | 30 | 10 | 6 | Fettschmierung Lubricant grease | 8'000 | 1 : 1 | |