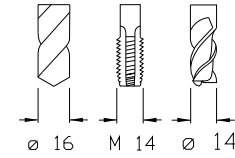




SUM 20 L-TOR

6'000 min⁻¹ / rpm i = 1:1



Axial-Bohr-Fräseinrichtung
Axial drilling and milling unit
Testa ad diritto di foratura e fresatura
Unité de perçage et de fraisage axiale

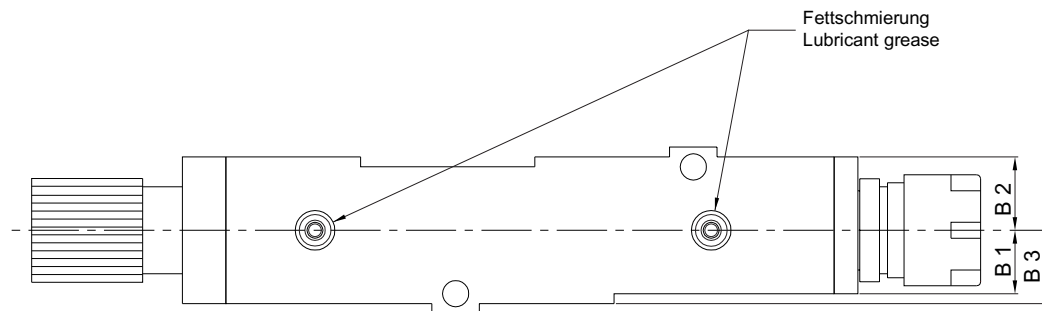
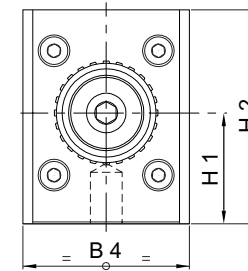
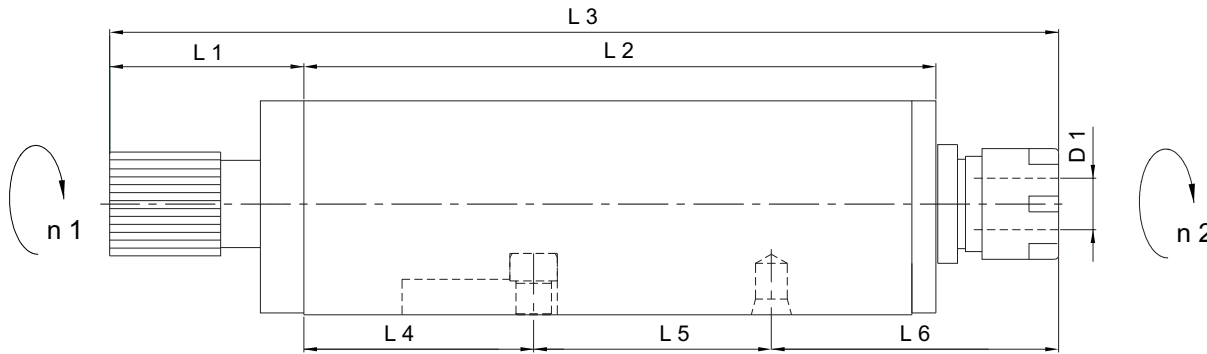
Externe Kühlmittelzuführung

External coolant supply

Liquido refrigerante esterno

Arrosage par l'extérieur

Version: 09.09.2005 Page 32



	Bestell-Nr. Ref. No.	Axialkopf 90° Axialhead	L 1	L 2	L 3	L 4	L 5	L 6	H 1	H 2	B 1	B 2	B 3	B 4	D 1 Ø max.	Nm max.	Schmierung Lubrication	rpm max. min ⁻¹	i n 1 : n 2	Zubehör Accessory
A	14.018.7.0022.0	SUM 20 L-TOR ER 20	49	159.5	239.5	58	60	72.5	28	54	16	18.5	18.5	42	13	-	Fettschmierung Lubricant grease	6'000	1:1	-