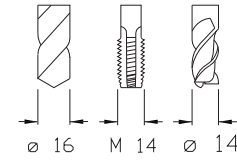




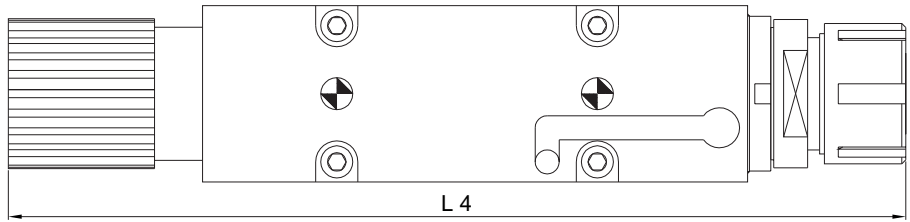
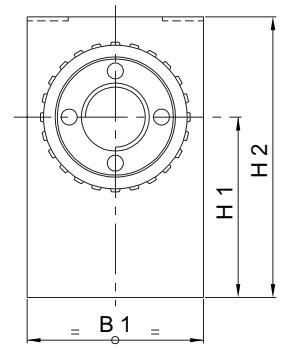
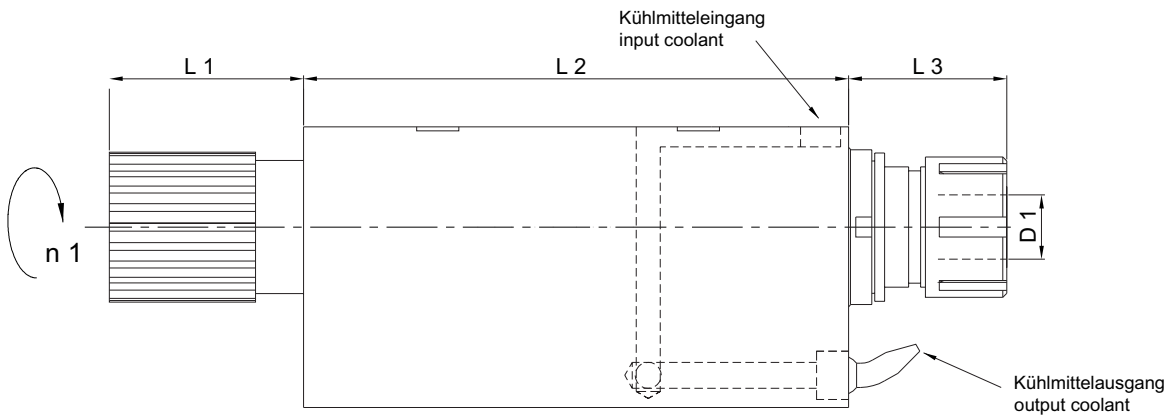
10'000 min<sup>-1</sup> / rpm i = 1:1



Axial-Bohr-Fräseinrichtung  
Axial drilling and milling unit  
Testa ad diritto di foratura e fresatura  
Unité de perçage et de fraisage axiale

Externe Kühlmittelzuführung  
External coolant supply  
Liquido refrigerante esterno  
Arrosage par l'extérieur

Version: 11.05.2005 Page 91



	Bestell-Nr. Ref. No.	Axialkopf Axialhead	L 1	L 2	L 3	L 4	H 1	H 2	B 1	D 1 Ø max.	Nm max.	Schmierung Lubrication	rpm max. min -1	i n 1 : n	Zubehör Accessory
A	14.018.7.0015.1	SUM 25 L-TOR ER 25	48.5	136	39.5	224	45	70	44	16	-	Fettschmierung Lubricant grease	10'000	1:1	-

Konstruktions- und Massänderungen vorbehalten - Design data and dimensions subject to change - Cambiamento della costruzione e delle misure riservato - Droit de modification de structure et de cotes réservées