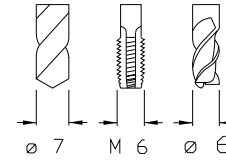




6'000 min -1 / rpm i = 1:1



Axial-Bohr-Fräseinrichtung
Axial drilling and milling unit
Testa ad diritto di foratura e fresatura
Unité de perçage et de fraisage axiale

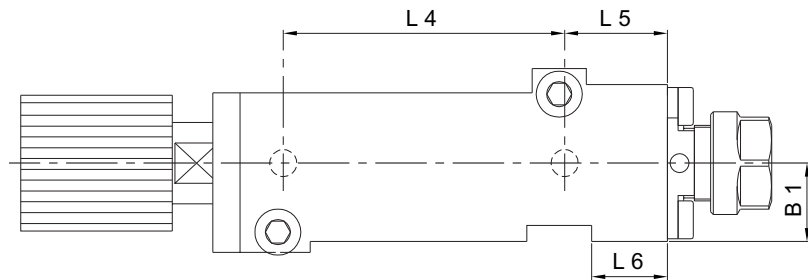
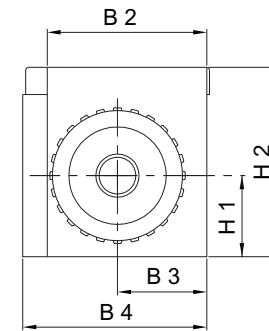
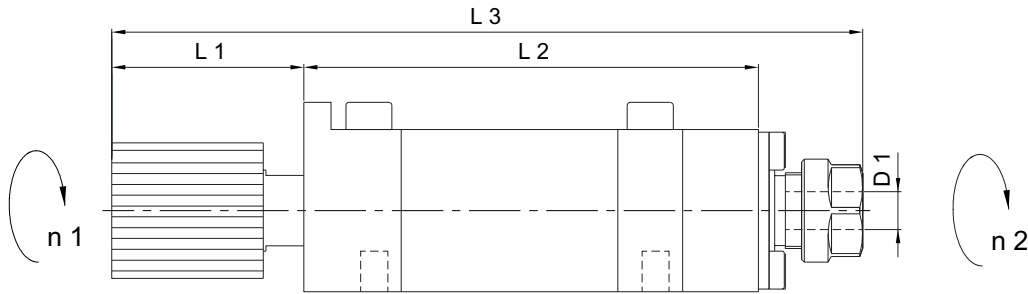
Externe Kühlmittelzuführung

External coolant supply

Liquido refrigerante esterno

Arrosage par l'extérieur

Version: 24.04.2006 Page 02



	Bestell-Nr. Ref. No.	Axialkopf 90° Axialhead	L 1	L 2	L 3	L 4	L 5	L 6	H 1	H 2	B 1	B 2	B 3	B 4	D 1 Ø max.	Nm max.	Schmierung Lubrication	rpm max. min -1	i n 1 : n 2	Zubehör Accessory
A	14.101.0.0026.0	TL / 1 ER 11	35.5	84	138.8	52	19	14	15	30	14.5	29.5	16.5	34	7	-	Fettschmierung Lubricant grease	6'000	1:1	-